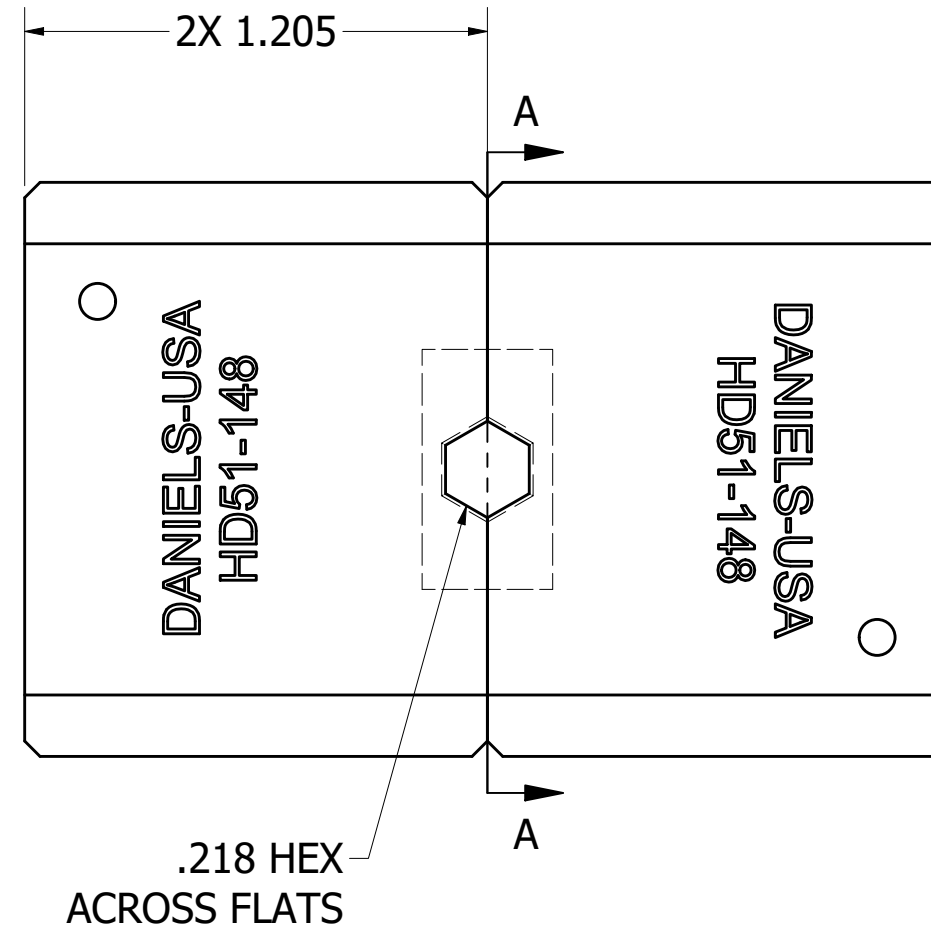
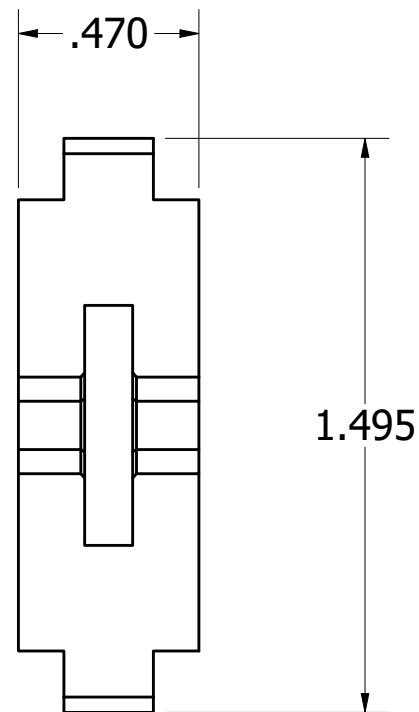


REVISIONS


REV	ECO NO.	DESCRIPTION	BY	DATE	APP'D BY	DATE
A		ORIGINAL RELEASE	H. DAVID	10/17/2024		



**UNCONTROLLED DOCUMENT
WILL NOT BE UPDATED**

DIMENSIONS IN INCHES - UNLESS OTHERWISE SPECIFIED
RESTRICTED & CONFIDENTIAL

CONFIDENTIAL PROPERTY OF DANIELS MANUFACTURING CORP. NOT TO BE DISCLOSED TO OTHERS. REPRODUCTION OR USED FOR ANY OTHER PURPOSE EXCEPT AS AUTHORIZED IN WRITING BY DANIELS MANUFACTURING. MUST BE RETURNED TO DANIELS MANUFACTURING CORP. ON COMPLETION OF ORDER OR PURPOSES FOR WHICH LENT.

DRN. H. DAVID	DATE 10/17/2024	INTERPRET PER ASME Y14.5M-2018	
CHK'D	DATE	 DANIELS MANUFACTURING CORP. ORLANDO, FLORIDA CAGE 11851	
APP'D	DATE		
NOTE: THIS DRAWING IS AN OUTLINE DRAWING OF THE RESPECTIVE DMC PART NUMBER INDICATED.		TITLE DIE SET ENVELOPE DRAWING	
WHERE USED:		SIZE B	
SCALE N.T.S.		CAD NO. HD51-148_ENV	SHEET 1 OF 1
		PART NO. HD51-148	REV. A