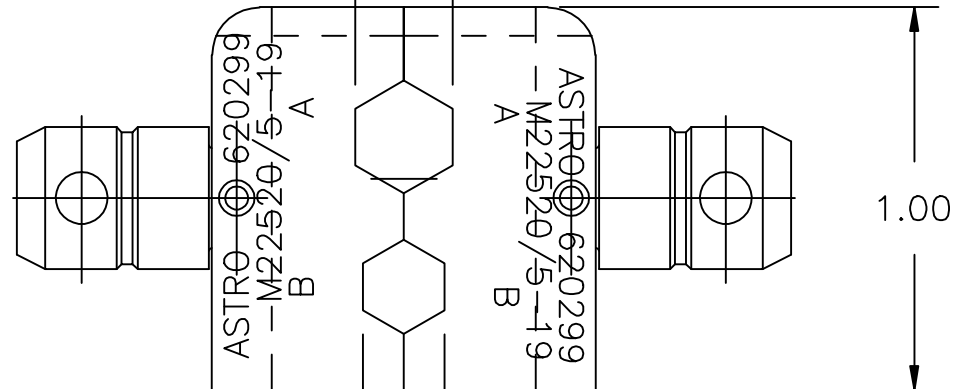


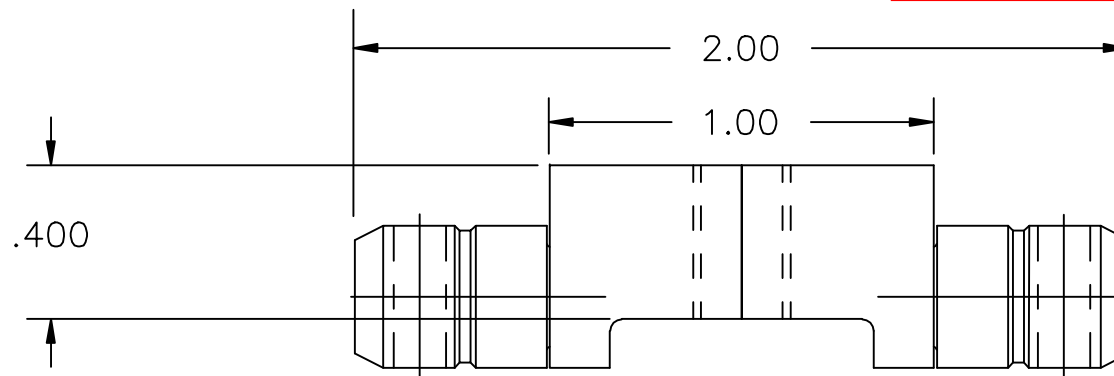
.255 HEX
ACROSS FLATS

620299-ENV




.213 HEX
ACROSS FLATS

**UNCONTROLLED DOCUMENT
WILL NOT BE UPDATED**



NOTES: I. THIS IS AN AUTOCAD DRAWING DO NOT CHANGE MANUALLY.

					THESE DRAWINGS, SPECIFICATIONS OR OTHER DATA ARE AND REMAIN, THE PROPERTY OF ASTRO TOOL CORP. AND MUST BE RETURNED UPON REQUEST. THEY CONTAIN INFORMATION OWNED AND/OR DEVELOPED BY ASTRO AT ITS OWN PRIVATE EXPENSE AND MAY NOT BE USED, DUPLICATED OR DISCLOSED TO OTHERS, IN WHOLE OR IN PART FOR DESIGN, MANUFACTURE OR PROCUREMENT WITHOUT THE WRITTEN PERMISSION OF ASTRO TOOL CORP. EACH AND EVERY TIME.	SCALE: N.T.S.	UNLESS OTHERWISE SPECIFIED: DECIMALS: .XXX ± .005 .XX ± .010 .X ± .030 ANGLES: ± 1°	 ASTRO TOOL CORP. 21615 S.W. TUALATIN VALLEY HWY., BEAVERTON OR 97006		CAGE 58164
						DWN BY: DYO				
A	NEW RELEASE.	DYO	09-16-14	MMK		DATE: 09-16-14		DESCRIPTION: ENVELOPE DRAWING: 620299 DIE SET, M22520/5-19		
REV.	DESCRIPTION	BY	DATE	APR.		APPROVED:		PART NO.		A

PART NO. A 620299-ENV