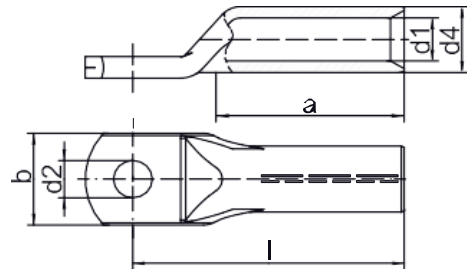


## Data sheet Compression cable lugs, Al



Figure similar



Drawing

### A: Dimensions:

Size of bolt dia.	Part No.	Nominal cross section mm <sup>2</sup>		Code	Dimension mm							Number of crimps		Weight 100 pcs. ~kg	Packing unit/pcs
		rm/sm	re/se		a	b	d1	d2	d4	l	Al (7 mm)	Al (wide)			
M 6	<b>202R6</b>	10	16	10	32	16	5.0	6.5	10	52	4	2	0.86	25	
M 8	<b>202R8</b>	10	25	10	32	18	5.0	8.5	10	52	4	2	0.88	25	
	<b>203R8</b>	16	25	12	32	18	5.8	8.5	12	52	4	2	1.37	10	
M 10	<b>203R10</b>	16	25	12	32	18	5.8	10.5	12	52	4	2	1.39	10	
M 8	<b>204R8</b>	25	35	12	38	18	6.8	8.5	12	60	4	2	1.41	10	
M 10	<b>204R10</b>	25	35	12	38	18	6.8	10.5	12	60	4	2	1.46	10	
	<b>205R10</b>	35	50	14	42	21	8.2	10.5	14	67	5	2	2.08	10	
M 12	<b>205R12</b>	35	50	14	42	21	8.2	13.0	14	67	5	2	2.05	10	
M 10	<b>206R10</b>	50	70	16	45	25	9.8	10.5	16	72	5	2	2.68	10	
M 12	<b>206R12</b>	50	70	16	45	25	9.8	13.0	16	72	5	2	2.73	10	
M 10	<b>207R10</b>	70	95	18	55	28	11.2	10.5	18.5	86	6	3	4.42	10	
M 12	<b>207R12</b>	70	95	18	55	28	11.2	13.0	18.5	86	6	3	4.27	10	
M 10	<b>208R10</b>	95	120	22	55	32	13.2	10.5	22	90	6	3	7.40	4	
M 12	<b>208R12</b>	95	120	22	55	32	13.2	13.0	22	90	6	3	7.50	4	
M 16	<b>208R16</b>	95	120	22	55	34	13.2	17.0	22	90	6	3	7.30	4	
M 12	<b>209R12</b>	120	150	22	55	32	14.7	13.0	23	91	6	3	6.68	4	
M 16	<b>209R16</b>	120	150	22	55	34	14.7	17.0	23	91	6	3	6.41	4	
M 12	<b>210R12</b>	150	185	25	63	35	16.5	13.0	25	103	6	3	9.64	4	
M 16	<b>210R16</b>	150	185	25	63	35	16.5	17.0	25	103	6	3	9.24	4	
M 12	<b>211R12</b>	185	240	28	65	40	18.5	13.0	28	106	6	3	12.61	1	
M 16	<b>211R16</b>	185	240	28	65	40	18.5	17.0	28.5	106	6	3	11.92	1	
M 20	<b>211R20</b>	185	240	28	65	40	18.5	21.0	28	106	6	3	13.10	1	
M 12	<b>212R12</b>	240	300	32	70	45	21.3	13.0	32	116	8	3	18.30	1	
M 16	<b>212R16</b>	240	300	32	70	45	21.3	17.0	32	116	8	3	17.60	1	
M 20	<b>212R20</b>	240	300	32	70	45	21.3	21.0	32	116	8	3	17.30	1	
M 16	<b>213R16</b>	300	--	34	75	49	23.6	17.0	34	124	8	3	17.50	1	
M 20	<b>213R20</b>	300	--	34	75	49	23.6	21.0	34	124	8	3	17.30	1	
M 16	<b>214R16</b>	400	--	38	95	58	26.0	17.0	38.5	165	--	4	32.20	1	
M 20	<b>214R20</b>	400	--	38	95	58	26.0	21.0	38.5	165	--	4	31.90	1	

re = round single solid wire; rm = round multi-stranded; se = sector shaped single solid wire; sm = sector shaped multi-stranded sector shaped conductors must be pre-rounded

## B: Material specifications:

### 1.1 General

Material: E-aluminium

- 1.1.1 Maximum temperature: Max. 120°C
- 1.1.2 Tube dimension to DIN 46329
- 1.1.3 With Code number for clear tool assignment
- 1.1.4 Filled with contact grease for optimum crimp characteristics
- 1.1.5 For non-tension connections of aluminium conductors to DIN EN 60228 and aluminum cables to DIN EN 50182
- 1.1.6 16 – 400mm<sup>2</sup> IEC-tested

## C: Processing information:

### 1.2 Standard crimping indent dies

#### 1.2 Series 4

Compatible tools

- 1.2.1 Battery hydraulic tools: EK35/4ML, EK35/4
- 1.2.2 Hand tool: K35/4

Die Part No.	HA410	HA41625	HA435	HA450	HA470
Cross section mm <sup>2</sup>	10	16-25	35	50	70

#### 1.3 Series 22

Compatible tools

- 1.3.1 Battery hydraulic tool: EKM60/22IS, EK60/22, EKM60/22, EKM60UNV + UA22, EK60UNV + UA22
- 1.3.2 Hand hydraulic tools: HK60/22, HK60UNV + UA22
- 1.3.3 Crimping heads: PK22, PK60UNV + UA22
- 1.3.4 Hydraulic tool for workbench: THK22
- 1.3.5 Hand tools: K22

Die Part No.	A2210	A221625	A2235	A2250	A2270	A2295120	A22150
Cross section mm <sup>2</sup>	10	16 + 25	35	50	70	95 + 120	150
Die Part No.	A22185	A22240	A22300				
Cross section mm <sup>2</sup>	185	240	300				

## 1.4 Series 13

### Compatible tools

- 1.4.1 Battery hydraulic tools: EK120/32, EK120/42, EK120U, EK135FT, EK120UNV
- 1.4.2 Hand hydraulic tools: HK120/30, HK120/42, HK120U
- 1.4.3 Crimping heads: PK120/42, PK120U
- 1.4.4 Hydraulic tool for workbench: THK120

<b>Die Part No.</b>	<b>HA1310</b>	<b>HA131625</b>	<b>HA1335</b>	<b>HA1350</b>	<b>HA1370</b>	<b>HA1395120</b>	<b>HA13150</b>
<b>Cross section mm<sup>2</sup></b>	10	16 + 25	35	50	70	95 + 120	150
<b>Die Part No.</b>	<b>HA13185</b>	<b>HA13240</b>	<b>HA13300</b>				
<b>Cross section mm<sup>2</sup></b>	185	240	300				

## 1.5 Series 25

### Compatible tools

- 1.5.1 Crimping head: PK25/2

<b>Die Part No.</b>	<b>HA25400</b>
<b>Cross section mm<sup>2</sup></b>	400

## 1.6 ID

### Compatible tools

- 1.6.1 Battery hydraulic tools: EKM60ID; Cross section 50-240mm<sup>2</sup>
- 1.6.2 Battery hydraulic tools: PK60ID; Cross section 50-240mm<sup>2</sup>

## D: Certification and Tests

- 1. IEC 61238-1, class A in an accredited test laboratory