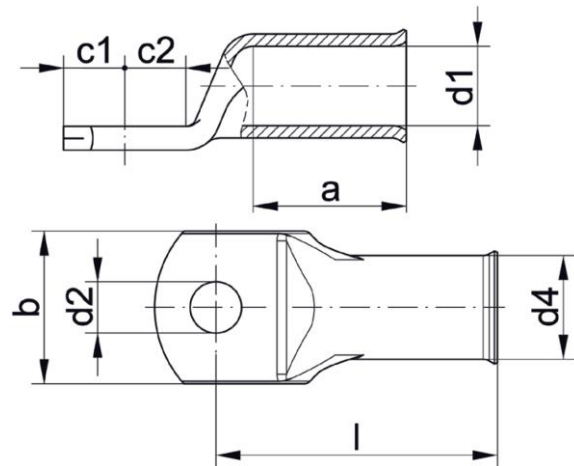


Data sheet flared L-Series

Available from 1.5 up to 630mm² (flared from 6mm²), bolt size M3 up to M20.



Figure similar



Drawing

A: Dimensions:

Part No.	Cross section class 2 mm ²	Cross section class 5 mm ²	Stud hole	Dimensions mm								Packing unit/pcs
				d1	a	b	d2	d4	c1	c2	l	
L-1.5/3MS	-	1,5	M3	1,8	6	6,5	3,2	3,3	3,25	4	12	100
L-1.5/4MS			M4	1,8	6	6,5	4,3	3,3	4	5	13	100
L-1.5/5MS			M5	1,8	6	7,5	5,3	3,3	4,75	5,5	14	100
L-1.5/6MS			M6	1,8	6	9	6,5	3,3	6,5	6,5	16	100
L-2.5/3MS	-	2,5	M3	2,3	6	7,5	3,2	4,2	3,25	4	12	100
L-2.5/4MS			M4	2,3	6	7,5	4,3	4,2	4	5	13	100
L-2.5/5MS			M5	2,3	6	8,5	5,3	4,2	4,75	5,5	14	100
L-2.5/6MS			M6	2,3	6	9,5	6,5	4,2	6,5	7	16	100
L-2.5/8MS			M8	2,3	6	13	8,5	4,2	7,75	9,5	20	100
L-4/4MS	-	4	M4	3	8	8,5	4,3	5	4,75	5,5	17	100
L-4/5MS			M5	3	8	9	5,3	5	4,75	6	17	100
L-4/6MS			M6	3	8	10	6,5	5	6,5	7	19	100
L-4/8MS			M8	3	8	13	8,5	5	8,5	9,5	22	100
L-6/5FMS	6	6	M5	4	9	9,5	5,3	6	6,5	6,5	19	100
L-6/6FMS			M6	4	9	10	6,5	6	7	7	19	100
L-6/8FMS			M8	4	9	14	8,5	6	8,5	8,5	22	100
L-6/10FMS			M10	4	9	17	10,5	6	12	12	24,5	100

Part No.	Cross section class 2 mm ²	Cross section class 5 mm ²	Stud hole	Dimensions mm							Packing unit/pcs	
				d1	a	b	d2	d4	c1	c2		l
L-10/5FMS	10	10	M5	4,4	10	10	5,3	6	6,25	6,5	21	100
L-10/6FMS			M6	4,4	10	10	6,5	6	7	7	21	100
L-10/8FMS			M8	4,4	10	13	8,5	6	8,5	8,5	24	100
L-10/10FMS			M10	4,4	10	16	10,5	6	12	12	27,5	100
L-10/12FMS			M12	4,4	10	17	13	6	13	13	29	100
L-16/5FMS	16	16	M5	5,5	11	11,5	5,3	8	5,5	6,5	24	100
L-16/6FMS			M6	5,5	11	11,5	6,5	8	6,25	7,5	24	100
L-16/8FMS			M8	5,5	11	14	8,5	8	8,5	9,5	27	100
L-16/10FMS			M10	5,5	11	17	10,5	8	10,5	11,5	29	100
L-16/12FMS			M12	5,5	11	19	13	8	12	13	31	100
L-25/5FMS	25	25	M5	6,8	12	13	5,5	9	7,5	7,5	26	100
L-25/6FMS			M6	6,8	12	13	6,5	9	7,5	7,5	26	100
L-25/8FMS			M8	6,8	12	14	8,5	9	10	10	28	100
L-25/10FMS			M10	6,8	12	17	10,5	9	12	12	31	100
L-25/12FMS			M12	6,8	12	19	13	9	13	13	32	100
L-35/6FMS	35	35	M6	8,2	15	16	6,5	11	7,5	7,5	30	100
L-35/8FMS			M8	8,2	15	16	8,5	11	10	10	32	100
L-35/10FMS			M10	8,2	15	18	10,5	11	12	12	35	100
L-35/12FMS			M12	8,2	15	19	13	11	13	13	36	100
L-35/14FMS			M14	8,2	15	21	15	11	14,5	14,5	38	100
L-35/16FMS			M16	8,2	15	26	17	11	14,5	14,5	38	100
L-50/6FMS	50	50	M6	9,5	18	18	6,5	12	7,5	7,5	36	100
L-50/8FMS			M8	9,5	18	18	8,5	12	10	10	36	100
L50/10FMS			M10	9,5	18	18	10,5	12	12	12	38	100
L-50/12FMS			M12	9,5	18	21	13	12	13	13	39	100
L-50/14FMS			M14	9,5	18	21	19	12	14,5	14,5	42	100
L-50/16FMS			M16	9,5	18	26	17	12	16	16	43	100
L-70/6FMS	70	70	M6	11,2	20	21	6,5	14,5	10	10	39	100
L-70/8FMS			M8	11,2	20	21	8,5	14,5	10	10	39	100
L-70/10FMS			M10	11,2	20	21	10,5	14,5	12	12	41	100
L-70/12FMS			M12	11,2	20	22	13	14,5	13	13	42	100
L-70/14FMS			M14	11,2	20	23	15	14,5	14,5	14,5	45	100
L-70/16FMS			M16	11,2	20	26	17	14,5	16	16	46	100
L-95/8FMS	95	95	M8	13,4	22	25	8,5	17	10	10	45	50
L-95/10FMS			M10	13,4	22	25	10,5	17	12	12	45	50
L-95/12FMS			M12	13,4	22	25	13	17	13	13	47	50
L-95/14FMS			M14	13,4	22	27	15	17	14,5	14,5	49	50
L-95/16FMS			M16	13,4	22	27	17	17	16	16	51	50
L-95/20FMS			M20	13,4	22	30	21	17	16	16	57	50

Part No.	Cross section class 2 mm ²	Cross section class 5 mm ²	Stud hole	Dimensions mm							Packing unit/pcs	
				d1	a	b	d2	d4	c1	c2		l
L-120/8FMS	120	120	M8	15	26	28	8,4	19,5	14	14	51	50
L-120/10FMS			M10	15	26	28	10,5	19,5	14	14	51	50
L-120/12FMS			M12	15	26	28	13	19,5	14	14	51	50
L-120/14FMS			M14	15	26	28	15	19,5	14	14	51	50
L-120/16FMS			M16	15	26	28	15	19,5	15	15	52	50
L-120/20FMS			M20	15	26	36	21	19,5	22	22	63	50
L-150/8FMS	150	150	M8	16,5	30	31	10,5	21	14	14	56	50
L-150/10FMS			M10	16,5	30	31	10,5	21	14	14	56	50
L-150/12FMS			M12	16,5	30	31	13	21	15	15	57	50
L-150/14FMS			M14	16,5	30	31	15	21	15	15	57	50
L-150/16FMS			M16	16,5	30	31	17	21	16	16	58	50
L-150/20FMS			M20	16,5	30	39	21	24	22	22	69	50
L-185/10FMS	185	185	M10	19	30	35	10,5	24	18	18	65	50
L-185/12FMS			M12	19	30	35	13	24	18	18	65	50
L-185/14FMS			M14	19	30	35	15	24	18	18	65	50
L-185/16FMS			M16	19	30	35	17	24	18	18	65	50
L-185/20FMS			M20	19	30	39	21	24	22	22	69	50
L-240/10FMS	240	240	M10	21	35	39	10,5	26	21,5	19	72	50
L-240/12FMS			M12	21	35	39	13	26	21,5	19	72	50
L-240/14FMS			M14	21	35	39	15	26	21,5	19	72	50
L-240/16FMS			M16	21	35	39	17	26	21,5	19	72	50
L-240/20FMS			M20	21	35	39	21	26	21,5	19	72	50
L-300/12FMS	300	300	M12	23,5	44	43	13	29,5	24	24	87	25
L-300/14FMS			M14	23,5	44	43	15	29,5	24	24	87	25
L-300/16FMS			M16	23,5	44	43	17	29,5	24	24	87	25
L-300/20FMS			M20	23,5	44	43	21	29,5	24	24	87	25
L-400/12FMS	400	400	M12	27	44	49	13	34	24	24	90	20
L-400/14FMS			M14	27	44	49	15	34	24	24	90	20
L-400/16FMS			M16	27	44	49	17	34	24	24	90	20
L-400/20FMS			M20	27	44	49	21	34	24	24	90	20
L-500/16FMS	500	500	M16	31	68	56	17	38	24	24	120	10
L-500/20FMS			M20	31	68	56	21	38	24	24	120	10
L-630/16FMS	630	630	M16	34	68	59	17	40	24	24	120	10
L-630/20FMS			M20	34	68	59	21	40	24	24	120	10

B: Material specifications:

1. General

Material: Cu according EN 13600

2. Condition

2.1 Surface

2.1.1 smooth, bright, even, no tears, scoring, folds, blisters, no other defects

2.1.2 averaged roughness depth Rz max. 2µm

2.1.3 galvanically tined (3 – 5 µm)

2.1.4 Maximum temperature: Min -40°C – Max. 120°C

C: Processing information:

3. Conductor compatibility

Compatible with class 2 conductor when using the hexagonal crimp and compatible with class 2 and class 5 according to IEC 60228 when using the indent crimp of the EKM60ID.

4. Standard crimping indent dies

4.1 EKM60IDCF, indent crimp

4.1.1 10-240 mm²

4.2 EK30ID

4.2.1 6-120 mm²

4.3 Series 50, hexagonal crimp

4.3.1 Compatible tools

4.3.1.1 Battery hydraulic tool: EK1550ML

4.3.1.2 Battery mechanic tool: EK50ML

4.3.1.3 Hand tool: K50

Part No.	L501625
Cross section mm ²	16-25

4.4 Series 4, hexagonal crimp

4.4.1 Compatible tools

4.4.1.1 Battery hydraulic tools: EK354ML, EK354

4.4.1.2 Hand tools: K354

Part No.	HL46	HL410	HL416	HL425	HL435	HL450	HL470	HL495	HL4120	HL4150
Cross section mm ²	6	10	16	25	35	50	70	95	120	150

4.5 Series 22, hexagonal crimp

4.5.1 Compatible tools

- 4.5.1.1 Battery hydraulic tools: EKM6022, EK6022, EKM60UNV + UA22, EK60UNV + UA22
- 4.5.1.2 Hand hydraulic tools: HK6022, HK60UNV + UA22
- 4.5.1.3 Crimping heads: PK22, PK60UNV + UA22
- 4.5.1.4 Hydraulic tool for workbench: THK22
- 4.5.1.5 Hand tool: K22

Part No.	L226	L2210	L2216	L2225	L2235	L2250	L2270
Cross section mm²	6	10	16	25	35	50	70
Part No.	L2295	L22120	L22150	L22185	L22240	L22300	
Cross section mm²	95	120	150	185	240	300	

4.6 Series 13, hexagonal crimp

4.6.1 Compatible tools

- 4.6.1.1 Battery hydraulic tools: EK12032, EK12042, EK120UNV + UA12TKL, EK120U, EK135FT + UA15T
- 4.6.1.2 Hand hydraulic tools: HK12030, HK12042, HK120U
- 4.6.1.3 Crimping heads: HK122EL380, PK12042, PK120U
- 4.6.1.4 Hydraulic tool for workbench: THK120

Part No.	HL1310	HL1316	HL1325	HL1335	HL1350	HL1370
Cross section mm²	10	16	25	35	50	70
Part No.	HL1395	HL13120	HL13150	HL13185	HL13240	HL13300
Cross section mm²	95	120	150	185	240	300
Part No.	HL13400					
Cross section mm²	400					

4.7 Series 15, hexagonal crimp

4.7.1 Compatible tools

- 4.7.1.1 Battery hydraulic tool: EK135FT

Part No.	HL15500	HL15630
Cross section mm²	500	630

For cross sections smaller than 500mm² you can use the series 13 with an adapter

4.8 Series 25, hexagonal crimp

4.8.1 Compatible tools

4.8.2 Crimping heads: HK252, HK252EL380, PK252

Part No.	HL2516	HL2525	HL2535	HL2550	HL2570	HL2595
Cross section mm²	16	25	35	50	70	95
Part No.	HL25120	HL25150	HL25185	HL25240	HL25300	HL25400
Cross section mm²	120	150	185	240	300	400
Part No.	HL25500	HL25630				
Cross section mm²	500	630				

4.9 Mechanical Hand tools with not interchangeable dies:

K2	0,75-16 mm ² , indent crimp
K04L	10-25 mm ² , hexagonal crimp
K05L	6-70 mm ² , hexagonal crimp
K06L	6-120 mm ² , hexagonal crimp
K09L	25-150 mm ² , hexagonal crimp

C: Certification and Tests

1. Underwriters Laboratories (UL) tested and listed acc. to UL 486A-486B
2. Tube tested according IEC 61238-1, class a in an accredited test laboratory
3. Tube tested according to DIN EN 61373 category 1, class B